

Wear Sleeves

Part Number	Nominal Shaft Size "A"	Min Shaft Size	Max Shaft Size	Flange Diameter "B"	Width On Shaft "C"	Overall Width "D"	Max Sleeve Depth "E"	Max Install Depth "F"
Less Than 1 Inch Shafts								
99049	0.472	0.469	0.475	0.610	0.236	0.331	1.874	1.969
99050	0.500	0.498	0.502	0.610	0.248	0.343	2.000	2.095
99055	0.551	0.547	0.551	0.752	0.248	0.390	1.831	1.973
99056	0.563	0.560	0.566	0.752	0.248	0.390	1.831	1.973
99059	0.591	0.589	0.593	0.752	0.197	0.354	1.862	2.019
99062	0.625	0.623	0.627	0.752	0.315	0.406	2.000	2.091
99058	0.630	0.626	0.630	0.717	0.315	0.437	2.000	2.122
99068	0.669	0.667	0.671	0.874	0.315	0.433	2.000	2.118
99060	0.684	0.682	0.686	0.894	0.315	0.437	2.000	2.122
99082	0.706	0.704	0.709	0.961	0.315	0.433	1.811	1.929
99076	0.750	0.748	0.752	0.945	0.315	0.437	2.000	2.122
99077	0.750	0.748	0.752	0.900	0.375	0.500	2.000	2.125
99081	0.760	0.759	0.761	0.937	0.315	0.437	2.000	2.122
99080	0.781	0.780	0.784	0.937	0.315	0.437	2.000	2.122
99078	0.787	0.785	0.789	0.929	0.315	0.433	2.000	2.118
99083	0.813	0.812	0.815	1.188	0.375	0.563	3.000	3.188
99086	0.859	0.857	0.861	1.154	0.248	0.374	2.000	2.126
99084	0.866	0.861	0.866	1.189	0.260	0.358	1.854	1.952
99085	0.866	0.861	0.866	1.189	0.315	0.472	1.811	1.968
99087	0.875	0.873	0.877	1.094	0.315	0.437	2.000	2.122
99091	0.910	0.908	0.912	1.217	0.315	0.437	1.846	1.968
99092	0.945	0.940	0.945	1.130	0.315	0.437	2.000	2.122
99094	0.969	0.966	0.970	1.130	0.315	0.437	2.000	2.122
99096	0.969	0.966	0.970	1.130	0.626	0.720	2.000	2.094
99098	0.984	0.982	0.986	1.299	0.315	0.433	2.000	2.118
99099	0.998	0.995	1.002	1.217	0.312	0.437	2.032	2.157
1 Inch Shafts								
99100	1.000	0.998	1.002	1.220	0.315	0.437	2.000	2.122
99103	1.024	1.019	1.024	1.315	0.315	0.472	1.811	1.968
99106	1.063	1.060	1.064	1.319	0.315	0.437	1.843	1.965
99108	1.089	1.087	1.091	1.406	0.315	0.437	0.626	0.748
99111	1.102	1.100	1.104	1.374	0.374	0.500	1.843	1.969
99112	1.125	1.123	1.127	1.500	0.315	0.437	0.689	0.811
99116	1.125	1.123	1.127	1.500	0.374	0.500	0.689	0.815
99120	1.156	1.154	1.158	1.350	0.374	0.500	0.689	0.815
99122	1.175	1.173	1.178	1.402	0.315	0.437	0.689	0.811
99114	1.181	1.179	1.184	1.402	0.315	0.433	0.689	0.807
99118	1.188	1.185	1.190	1.402	0.315	0.437	0.689	0.811
99123	1.219	1.216	1.222	1.563	0.315	0.433	0.626	0.744
99141	1.240	1.237	1.243	1.539	0.315	0.437	0.689	0.811
99125	1.252	1.247	1.253	1.500	0.315	0.437	0.689	0.811
99128	1.260	1.257	1.263	1.500	0.315	0.437	0.689	0.811
99121	1.299	1.297	1.301	1.594	0.591	0.709	0.813	0.931
99129	1.313	1.308	1.314	1.598	0.248	0.374	0.815	0.941
99131	1.313	1.310	1.316	1.594	0.500	0.626	0.815	0.941
99134	1.339	1.333	1.339	1.626	0.500	0.626	0.815	0.941
99136	1.374	1.372	1.376	1.654	1.142	1.260	1.969	2.087
99137	1.374	1.372	1.376	1.654	0.787	0.906	1.969	2.088
99133	1.375	1.371	1.377	1.638	0.315	0.437	0.815	0.937

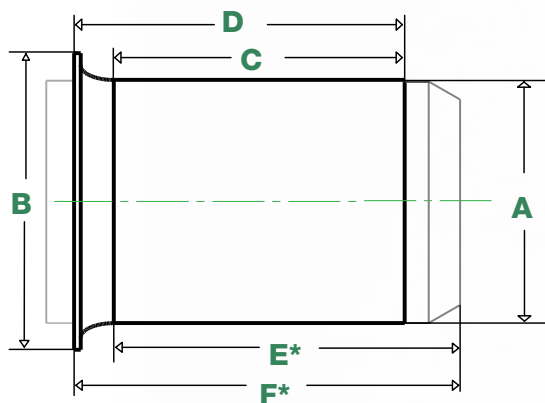
Wear Sleeves

Wear Sleeves

Part Number	Nominal Shaft Size "A"	Min Shaft Size	Max Shaft Size	Flange Diameter "B"	Width On Shaft "C"	Overall Width "D"	Max Sleeve Depth "E*"	Max Install Depth "F*"
-------------	---------------------------	----------------	----------------	------------------------	-----------------------	----------------------	--------------------------	---------------------------

99138	1.375	1.371	1.377	1.638	0.500	0.626	0.815	0.941
99139	1.375	1.375	1.381	1.638	0.512	0.630	0.815	0.933
99146	1.417	1.411	1.417	1.780	0.512	0.669	0.984	1.141
99143	1.438	1.432	1.438	1.780	0.563	0.689	1.016	1.142
99144	1.438	1.435	1.441	1.780	0.374	0.500	1.016	1.142
99145	1.457	1.453	1.460	1.781	0.375	0.500	0.811	0.936
99147	1.496	1.490	1.496	1.780	0.512	0.669	0.984	1.141
99149	1.500	1.497	1.503	1.780	0.563	0.689	1.016	1.142
99150	1.500	1.497	1.503	1.780	0.374	0.500	1.016	1.142
99152	1.523	1.520	1.526	1.858	0.437	0.563	1.016	1.142
99155	1.552	1.549	1.555	1.858	0.437	0.563	1.016	1.142
99156	1.563	1.559	1.565	1.858	0.563	0.689	1.016	1.142
99159	1.569	1.566	1.572	1.858	0.626	0.752	1.016	1.142
99153	1.575	1.569	1.575	1.846	0.390	0.508	1.000	1.118
99157	1.578	1.572	1.578	1.850	0.512	0.630	1.024	1.142
99160	1.605	1.602	1.608	1.937	0.500	0.642	1.000	1.142
99163	1.614	1.608	1.614	1.937	0.500	0.626	1.016	1.142
99162	1.625	1.622	1.628	1.874	0.315	0.437	1.016	1.138
99161	1.625	1.622	1.628	1.874	0.563	0.689	0.815	0.941
99169	1.650	1.647	1.654	2.087	0.445	0.571	0.843	0.969
99166	1.650	1.647	1.654	2.087	0.563	0.689	0.827	0.953
99165	1.656	1.653	1.659	2.087	0.551	0.689	0.827	0.965
99168	1.688	1.684	1.690	1.906	0.563	0.689	0.874	1.000
99167	1.688	1.685	1.691	1.906	0.315	0.437	0.874	0.996
99182	1.693	1.687	1.693	1.906	0.500	0.626	0.839	0.965
99173	1.713	1.710	1.716	1.985	0.375	0.500	0.815	0.940
99171	1.719	1.715	1.721	2.031	0.563	0.689	0.815	0.941
99170	1.739	1.736	1.742	2.063	0.374	0.500	0.815	0.941
99175	1.750	1.747	1.753	2.063	0.752	0.874	0.815	0.937
99180	1.750	1.747	1.753	2.063	0.531	0.626	0.878	0.973
99172	1.750	1.747	1.753	2.055	0.374	0.500	0.815	0.941
99174	1.750	1.747	1.753	2.063	0.563	0.689	0.815	0.941
99176	1.766	1.761	1.767	2.063	0.563	0.689	0.815	0.941
99177	1.772	1.769	1.775	2.087	0.551	0.669	0.811	0.929
99179	1.781	1.778	1.784	2.126	0.665	0.799	1.063	1.197
99181	1.813	1.809	1.815	2.091	0.563	0.689	1.000	1.126
99185	1.859	1.857	1.863	2.157	0.563	0.689	1.000	1.126

Wear Sleeves



* Maximum depths based on use of the included installation tool. Other depths can be achieved with the use of a different installation tool. See page 23 for installation instructions.

Wear Sleeves

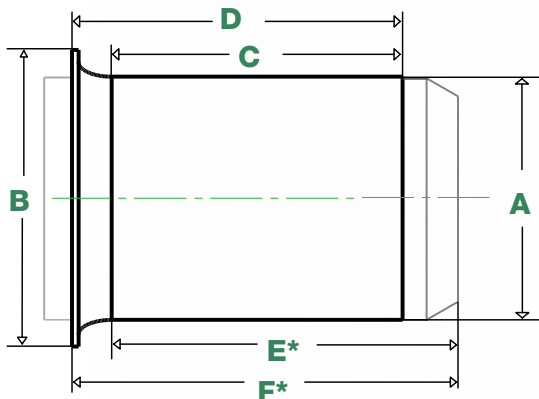
Part Number	Nominal Shaft Size "A"	Min Shaft Size	Max Shaft Size	Flange Diameter "B"	Width On Shaft "C"	Overall Width "D"	Max Sleeve Depth "E"	Max Install Depth "F"
99186	1.868	1.866	1.872	2.189	0.890	1.024	1.000	1.134
99184	1.875	1.872	1.878	2.205	0.374	0.516	1.047	1.189
99187	1.875	1.872	1.878	2.205	0.563	0.689	1.000	1.126
99188	1.875	1.872	1.878	2.205	0.295	0.413	0.740	0.858
99190	1.875	1.872	1.878	2.205	0.177	0.295	0.740	0.858
99189	1.891	1.887	1.893	2.205	0.551	0.669	0.984	1.102
99192	1.912	1.909	1.915	2.220	0.374	0.500	1.000	1.126
99193	1.938	1.934	1.940	2.220	0.563	0.689	1.000	1.126
99196	1.969	1.965	1.971	2.244	0.551	0.669	0.984	1.102
99198	1.980	1.977	1.983	2.315	0.563	0.705	1.047	1.189
2 Inch Shafts								
99199	2.000	1.997	2.003	2.406	0.563	0.689	1.000	1.126
99200	2.000	1.997	2.003	2.406	0.874	1.000	1.000	1.126
99204	2.047	2.040	2.047	2.469	0.500	0.626	1.358	1.484
99205	2.063	2.057	2.063	2.469	0.780	0.937	1.374	1.531
99210	2.125	2.123	2.128	2.421	0.500	0.752	1.280	1.532
99212	2.125	2.124	2.130	2.421	0.780	0.937	1.374	1.531
99215	2.165	2.162	2.168	2.441	0.787	0.906	1.252	1.371
99216	2.165	2.162	2.168	2.441	0.394	0.512	1.252	1.370
99218	2.188	2.186	2.192	2.500	0.780	0.937	1.315	1.472
99220	2.205	2.198	2.205	2.531	0.500	0.626	1.315	1.441
99224	2.205	2.197	2.205	2.531	0.779	0.936	3.150	3.307
99229	2.230	2.227	2.233	2.531	0.500	0.626	1.315	1.441
99230	2.230	2.227	2.233	2.531	0.780	0.906	1.252	1.378
99226	2.240	2.237	2.243	2.563	0.764	0.902	1.252	1.390
99225	2.250	2.249	2.255	2.531	0.780	0.937	1.315	1.472
99227	2.250	2.249	2.255	2.531	0.315	0.437	1.315	1.437
99219	2.283	2.280	2.286	2.598	0.781	0.938	1.375	1.532
99228	2.312	2.309	2.315	2.689	0.781	0.937	1.600	1.756
99231	2.313	2.309	2.315	2.689	0.780	0.937	1.374	1.531
99233	2.328	2.327	2.333	2.748	0.752	0.874	1.500	1.622
99234	2.362	2.359	2.365	2.748	0.630	0.748	1.465	1.583
99235	2.362	2.359	2.365	2.783	0.787	0.906	1.469	1.588
99241	2.362	2.359	2.365	2.783	0.370	0.449	1.374	1.453
99232	2.362	2.359	2.365	2.785	0.984	1.102	1.465	1.583
99236	2.375	2.369	2.375	2.748	0.780	0.937	1.374	1.531
99238	2.375	2.372	2.378	2.748	0.594	0.752	1.374	1.532
99237	2.375	2.374	2.380	2.748	0.780	0.937	1.374	1.531
99240	2.375	2.374	2.380	2.748	0.528	0.685	1.374	1.531
99243	2.438	2.434	2.440	2.827	0.780	0.937	1.394	1.551
99242	2.438	2.435	2.441	2.827	0.500	0.626	1.421	1.547
99244	2.441	2.434	2.441	2.827	0.500	0.626	1.421	1.547
99249	2.492	2.489	2.495	2.874	0.780	0.937	1.394	1.551
99253	2.500	2.497	2.503	2.819	0.555	0.650	0.890	0.985
99248	2.500	2.500	2.506	2.827	0.500	0.657	1.394	1.551
99250	2.500	2.500	2.506	2.819	0.780	0.937	1.374	1.531
99251	2.516	2.510	2.516	2.827	0.780	0.906	1.437	1.563
99254	2.559	2.556	2.562	2.850	0.787	0.906	1.374	1.493
99256	2.563	2.560	2.566	2.890	0.780	0.937	1.374	1.531
99259	2.598	2.595	2.601	2.992	0.780	0.937	1.252	1.409

Wear Sleeves

Wear Sleeves

Wear Sleeves

Part Number	Nominal Shaft Size "A"	Min Shaft Size	Max Shaft Size	Flange Diameter "B"	Width On Shaft "C"	Overall Width "D"	Max Sleeve Depth "E*"	Max Install Depth "F*"
99261	2.621	2.618	2.624	3.047	0.780	0.937	1.374	1.531
99264	2.625	2.621	2.627	3.047	0.780	0.906	1.374	1.500
99260	2.625	2.622	2.628	3.047	0.500	0.626	1.374	1.500
99262	2.625	2.625	2.631	3.047	0.780	0.937	1.374	1.531
99266	2.677	2.670	2.677	3.126	0.752	0.874	1.689	1.811
99268	2.730	2.727	2.733	3.126	0.780	0.906	1.315	1.441
99273	2.743	2.740	2.746	3.063	0.780	0.937	1.252	1.409
99274	2.750	2.745	2.751	3.126	0.780	0.937	1.252	1.409
99267	2.750	2.747	2.753	3.075	1.437	1.626	1.626	1.815
99270	2.750	2.747	2.753	3.126	0.780	0.937	1.252	1.409
99269	2.750	2.750	2.756	3.126	1.126	1.252	1.311	1.437
99272	2.750	2.750	2.756	3.126	0.406	0.563	1.252	1.409
99275	2.750	2.750	2.756	3.126	0.780	0.937	1.252	1.409
99276	2.756	2.753	2.759	3.126	0.787	0.945	1.252	1.410
99281	2.813	2.809	2.815	3.189	0.594	0.689	1.252	1.347
99284	2.835	2.828	2.835	3.224	0.752	0.874	1.343	1.465
99282	2.838	2.838	2.844	3.224	0.500	0.657	1.252	1.409
99286	2.869	2.866	2.872	3.189	0.780	0.937	1.252	1.409
99287	2.875	2.873	2.879	3.220	0.780	0.937	1.252	1.409
99290	2.938	2.937	2.943	3.343	0.500	0.642	1.331	1.473
99293	2.938	2.937	2.943	3.343	0.780	0.937	1.315	1.472
99289	2.953	2.950	2.956	3.272	0.594	0.689	1.083	1.178
99294	2.953	2.950	2.956	3.307	0.866	1.024	1.315	1.473
99295	2.953	2.950	2.956	3.272	0.335	0.472		0.137
99292	2.974	2.972	2.976	3.236	0.811	1.000	1.252	1.441
99291	2.993	2.990	2.996	3.358	0.484	0.626	1.331	1.473
99298	2.993	2.990	2.996	3.358	0.563	0.689	1.374	1.500
99299	2.993	2.990	2.996	3.350	0.811	1.000	1.280	1.469
3 Inch Shafts								
99296	3.000	2.997	3.003	3.240	0.811	0.937	1.374	1.500
99300	3.000	3.000	3.006	3.236	0.811	1.000	1.280	1.469
99303	3.000	3.000	3.006	3.346	0.626	0.811	1.280	1.465
99301	3.011	3.008	3.014	3.354	0.500	0.626	2.000	2.126
99306	3.071	3.064	3.071	3.465	0.752	0.874	2.055	2.177
99311	3.125	3.120	3.126	3.531	0.689	0.811	2.000	2.122
99312	3.125	3.120	3.126	3.531	0.811	1.000	2.000	2.189



* Maximum depths based on use of the included installation tool. Other depths can be achieved with the use of a different installation tool. See page 23 for installation instructions.

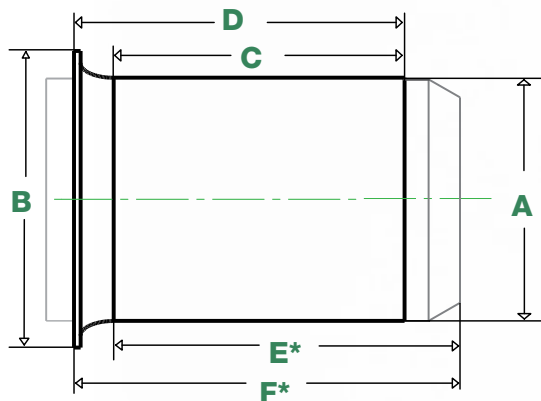
Wear Sleeves

Part Number	Nominal Shaft Size "A"	Min Shaft Size	Max Shaft Size	Flange Diameter "B"	Width On Shaft "C"	Overall Width "D"	Max Sleeve Depth "E"	Max Install Depth "F"
99307	3.125	3.124	3.132	3.524	0.551	0.709	2.031	2.189
99313	3.146	3.142	3.150	3.539	0.752	0.886	1.374	1.508
99315	3.150	3.146	3.153	3.543	0.827	0.945	1.374	1.492
99317	3.150	3.146	3.153	3.543	0.433	0.591	1.374	1.532
99328	3.228	3.225	3.231	3.587	0.661	0.846	1.752	1.937
99322	3.250	3.247	3.253	3.594	0.811	1.000	1.374	1.563
99324	3.250	3.250	3.256	3.575	0.594	0.720	1.374	1.500
99325	3.250	3.250	3.256	3.587	0.811	1.000	1.374	1.563
99326	3.250	3.250	3.256	3.587	0.689	0.874	1.252	1.437
99328	3.251	3.248	3.254	3.585	0.600	0.718	1.375	1.493
99331	3.310	3.307	3.313	3.689	0.811	1.000	1.374	1.563
99332	3.342	3.337	3.347	3.701	0.669	0.827	1.378	1.536
99333	3.342	3.337	3.347	3.701	0.827	0.984	1.378	1.535
99334	3.346	3.338	3.346	3.579	0.398	0.500	1.429	1.531
99337	3.375	3.373	3.379	3.693	0.811	1.000	1.374	1.563
99338	3.375	3.373	3.379	3.689	0.374	0.500	1.409	1.535
99339	3.438	3.435	3.441	3.843	0.780	0.906	1.406	1.532
99340	3.480	3.477	3.483	3.835	0.780	0.906	1.406	1.532
99346	3.500	3.497	3.503	3.843	0.626	0.811	1.346	1.531
99347	3.500	3.500	3.506	3.827	0.315	0.500	1.346	1.531
99350	3.500	3.500	3.506	3.843	0.811	1.000	1.346	1.535
99349	3.504	3.501	3.507	3.843	0.626	0.811	1.346	1.531
99351	3.543	3.540	3.546	4.000	0.709	0.906	1.811	2.008
99352	3.543	3.540	3.546	4.000	0.437	0.539	1.811	1.913
99353	3.543	3.540	3.546	4.000	0.528	0.665	1.752	1.889
99354	3.543	3.540	3.546	4.000	0.906	1.102	1.752	1.948
99356	3.563	3.560	3.566	3.902	0.811	1.000	1.752	1.941
99360	3.621	3.618	3.624	4.031	0.811	1.000	1.752	1.941
99362	3.625	3.623	3.629	4.031	0.811	1.000	1.752	1.941
99363	3.626	3.623	3.629	4.025	0.500	0.625	1.750	1.875
99368	3.688	3.684	3.690	4.031	0.315	0.437	0.874	0.996
99365	3.688	3.685	3.691	4.024	0.811	0.937	1.799	1.925
99359	3.730	3.727	3.733	4.031	0.469	0.594	1.799	1.924
99566	3.730	3.727	3.733	4.024	0.780	0.906	1.799	1.925
99369	3.740	3.737	3.743	4.024	0.827	0.945	1.799	1.917
99364	3.740	3.740	3.746	4.035	0.469	0.594	1.799	1.924
99374	3.740	3.740	3.746	4.031	0.343	0.500	1.799	1.956
99376	3.750	3.746	3.752	4.024	0.563	0.689	1.799	1.925
99367	3.750	3.750	3.756	4.024	0.343	0.500	1.799	1.956
99372	3.750	3.750	3.756	4.020	0.689	0.874	1.799	1.984
99386	3.871	3.868	3.874	4.185	0.813	1.000	1.875	2.062
99387	3.875	3.873	3.875	4.220	0.811	1.000	1.874	2.063
99393	3.937	3.935	3.941	4.311	0.811	1.000	2.047	2.236
4 Inch Shafts								
99395	4.000	3.998	4.006	4.374	0.598	0.724	2.047	2.173
99399	4.000	3.998	4.006	4.374	0.811	1.000	2.047	2.236
99400	4.000	3.998	4.006	4.374	0.650	0.776	1.374	1.500
99401	4.000	3.998	4.006	4.374	0.500	0.626	2.067	2.193
99409	4.094	4.090	4.098	4.437	0.787	0.945	1.417	1.575
99412	4.125	4.122	4.130	4.469	0.811	1.000	1.374	1.563

Wear Sleeves

Part Number	Nominal Shaft Size "A"	Min Shaft Size	Max Shaft Size	Flange Diameter "B"	Width On Shaft "C"	Overall Width "D"	Max Sleeve Depth "E*"	Max Install Depth "F*"
99413	4.134	4.130	4.138	4.469	0.787	0.913	1.378	1.504
99418	4.188	4.183	4.191	4.500	0.811	1.000	1.374	1.563
99422	4.230	4.226	4.234	4.610	0.709	0.906	1.366	1.563
99423	4.234	4.226	4.234	4.610	0.780	0.906	1.437	1.563
99424	4.250	4.248	4.256	4.610	0.811	1.000	1.437	1.626
99435	4.328	4.327	4.335	4.921	0.508	0.650	1.260	1.402
99434	4.331	4.322	4.331	4.921	0.449	0.591	1.295	1.437
99437	4.375	4.370	4.378	4.752	0.811	1.000	1.654	1.843
99438	4.406	4.402	4.409	4.752	0.752	0.886	1.299	1.433
99439	4.438	4.434	4.442	4.811	1.000	1.142	1.315	1.457
99450	4.500	4.496	4.504	4.902	0.811	1.000	1.260	1.449
99452	4.528	4.523	4.531	5.000	0.811	0.937	1.260	1.386
99463	4.626	4.621	4.629	5.063	1.000	1.252	1.374	1.626
99465	4.626	4.621	4.629	5.000	0.437	0.626	1.374	1.563
99468	4.688	4.685	4.693	5.063	0.811	1.000	1.374	1.563
99471	4.724	4.720	4.728	5.110	0.315	0.433	1.323	1.441
99473	4.724	4.720	4.728	5.110	0.787	0.984	1.260	1.457
99475	4.750	4.746	4.754	5.000	0.500	0.752	1.500	1.752
99472	4.803	4.799	4.807	5.177	0.787	0.945	1.260	1.418
99484	4.843	4.839	4.847	5.228	0.787	0.984	1.244	1.441
99487	4.875	4.871	4.879	5.248	0.626	0.752	1.437	1.563
99490	4.921	4.917	4.925	5.402	0.394	0.551	1.437	1.594
99492	4.921	4.917	4.925	5.402	1.024	1.260	1.437	1.673

5 Inch Shafts								
99498	5.000	4.998	5.006	5.402	0.689	0.874	1.437	1.622
99499	5.000	4.998	5.006	5.390	0.811	1.000	1.437	1.626
99501	5.000	4.998	5.006	5.402	0.539	0.681	1.437	1.579
99494	5.114	5.110	5.118	5.492	0.752	0.937	1.181	1.366
99491	5.125	5.117	5.125	5.492	0.866	0.996	1.280	1.410
99513	5.125	5.120	5.128	5.500	0.811	1.000	1.252	1.441
99525	5.250	5.246	5.254	5.559	0.811	1.000	1.252	1.441
99533	5.313	5.307	5.315	5.736	0.807	1.000	1.252	1.445
99537	5.375	5.371	5.379	5.874	0.811	1.000	1.252	1.441
99548	5.438	5.434	5.442	5.752	1.500	1.965	1.874	2.339
99547	5.476	5.472	5.480	5.902	0.563	0.752	1.232	1.421
99549	5.500	5.498	5.506	5.937	0.811	1.000	1.252	1.441



* Maximum depths based on use of the included installation tool. Other depths can be achieved with the use of a different installation tool. See page 23 for installation instructions.

Wear Sleeves

Part Number	Nominal Shaft Size "A"	Min Shaft Size	Max Shaft Size	Flange Diameter "B"	Width On Shaft "C"	Overall Width "D"	Max Sleeve Depth "E"	Max Install Depth "F"
99550	5.500	5.498	5.506	5.937	0.520	0.705	1.252	1.437
99552	5.512	5.508	5.516	5.945	0.807	1.000	1.252	1.445
99560	5.625	5.621	5.629	6.188	0.875	1.000	1.812	1.937
99571	5.709	5.699	5.709	6.098	0.752	0.874	1.811	1.933
99562	5.734	5.726	5.734	6.098	0.563	0.752	1.937	2.126
99575	5.750	5.746	5.754	6.181	0.811	1.000	1.752	1.941
99587	5.875	5.871	5.879	6.189	1.000	1.252	1.315	1.567
99595	5.906	5.896	5.906	6.260	1.024	1.181	1.280	1.437
99596	5.938	5.934	5.942	6.374	1.000	1.126	1.874	2.000
6 Inch Shafts								
99599	6.000	5.995	6.003	6.374	1.000	1.252	1.752	2.004
99601	6.000	5.995	6.003	6.358	0.500	0.752	1.752	2.004
99605	6.063	6.058	6.068	6.374	1.024	1.181	1.299	1.456
99606	6.097	6.093	6.102	6.575	1.024	1.181	1.299	1.456
99620	6.203	6.198	6.208	6.626	0.811	1.063	1.752	2.004
99625	6.250	6.245	6.255	6.626	1.031	1.252	1.752	1.973
99630	6.299	6.289	6.299	6.748	1.000	1.252	1.378	1.630
99650	6.500	6.495	6.505	7.000	1.000	1.252	1.378	1.630
99652	6.652	6.620	6.630	7.000	1.000	1.250	1.500	1.750
99640	6.688	6.683	6.693	7.189	1.252	1.496	1.752	1.996
99675	6.750	6.745	6.755	7.126	0.811	1.063	1.752	2.004
99687	6.890	6.880	6.890	7.362	1.102	1.260	1.378	1.536
7 Inch Shafts								
99700	7.000	6.995	7.005	7.476	1.000	1.252	1.685	1.937
99721	7.087	7.077	7.087	7.500	1.299	1.496	1.752	1.949
99725	7.250	7.244	7.254	7.760	1.252	1.500	2.173	2.421
99726	7.278	7.273	7.283	7.760	1.260	1.496	2.173	2.409
99745	7.453	7.444	7.454	7.858	0.811	1.000	1.252	1.441
99750	7.500	7.495	7.505	7.874	0.811	1.000	1.252	1.441
99775	7.750	7.745	7.755	8.272	1.000	1.315	1.874	2.189
99787	7.875	7.869	7.879	8.374	1.358	1.500	1.752	1.894
99799	7.938	7.933	7.943	8.374	1.000	1.252	1.752	2.004
8 Inch Shafts								
99800	8.000	7.995	8.005	8.374	1.000	1.252	1.752	2.004

Wear Sleeves